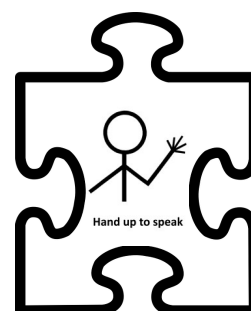
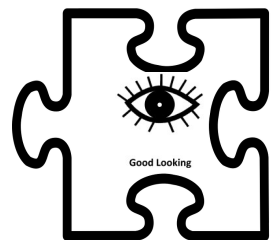
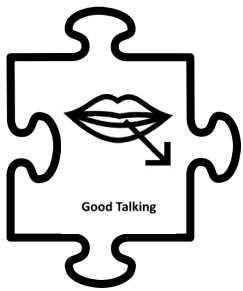
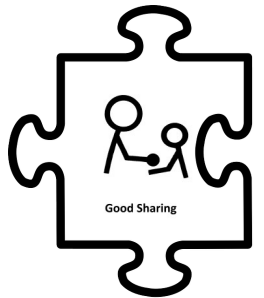
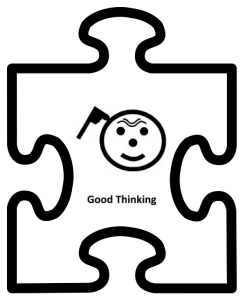


Pool Hayes Academy

SEND Department



Meet the SEND Team



Mr Browne
SENDCO

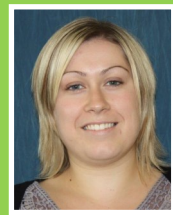


Mrs Williams
ARP Manager
Communication &
Interaction Lead



Mrs Talbot
Graduated
Approach Officer
Social, Emotional & Mental
Health Lead

Physical & Sensory Lead



Miss Stanley
Lead SEND TA
Cognition & Learning Lead



Mrs Watkins
SEND Admin/Clerical Officer

Designated
Level 2/3
ACEBase TA's

Specialist
Level 2/3
SEND TA's

Contact us

Tel: 01902 368147

Ext. 262

Email: m.watkins@poolhayes.attrust.org.uk

Communication and Interaction

An educational setting providing intensive support for children and young people with an autistic/speech, language and communications diagnosis. Offering both individual and small group teaching with guaranteed opportunities for inclusion.

Additionally trained and qualified staff with experience in meeting the needs of children and young people with autism and speech, language and communication difficulties.

Enhanced opportunities for the involvement of external professionals.
E.g. therapy services.

A socially and emotionally supportive environment which fully involves parents in their child's learning.

**ACEBase
ARP**

Individual planning and target setting which involves closer and more frequent scrutiny and recording of the students program.

Cognition and Learning

Specialist SEND TAs support students within their academic lessons and deliver a variety of interventions in order for them to access Quality First Teaching across a broad and balanced curriculum within a fully inclusive learning environment.

Health and Hygiene

Intervention

20

Intervention

60

Literacy

Transition

Pre-teach
Vocabulary

SEN Homework club

Numeracy

Lunchtime
nurture club

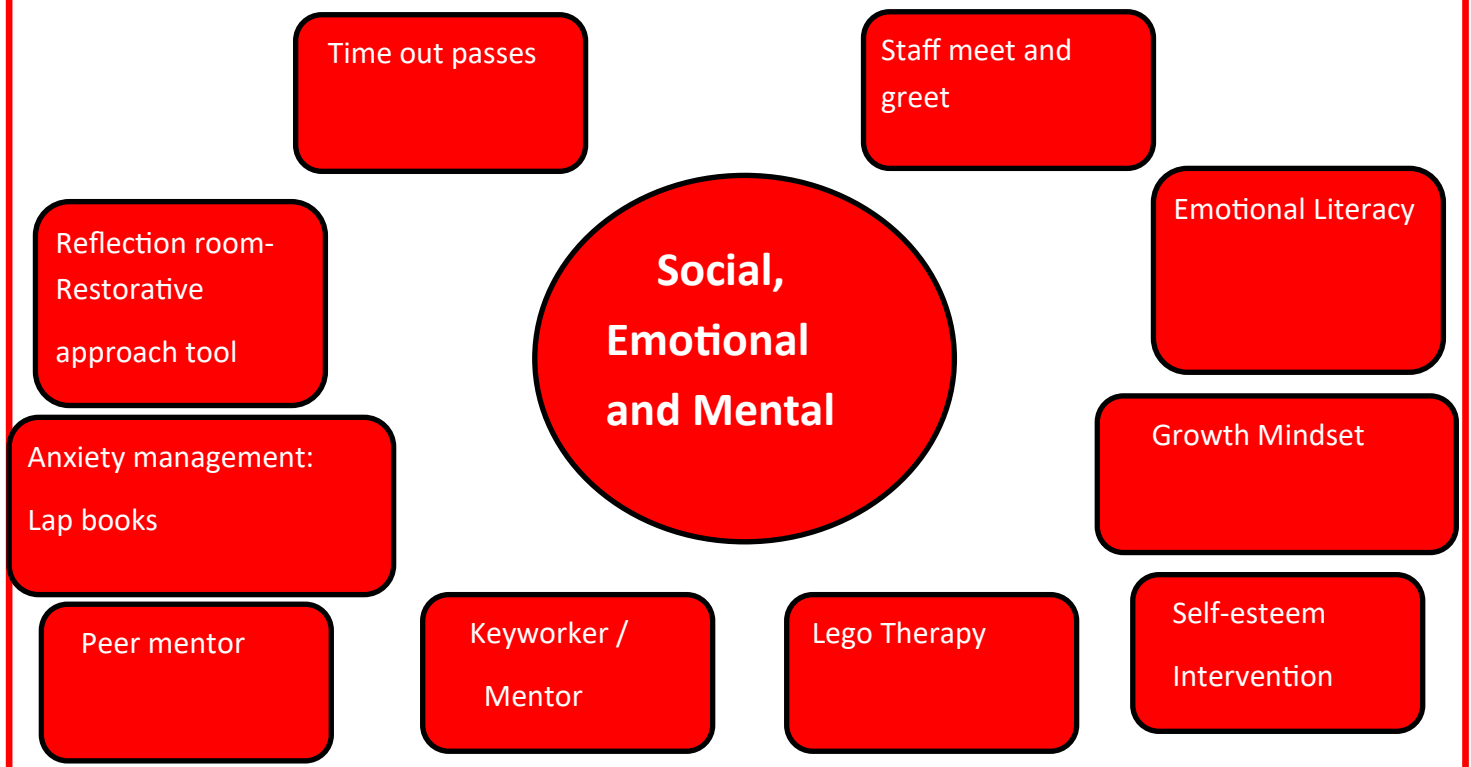
**TA
Support**

Visual stress
screening

Dyslexia
screening

Social, Emotional & Mental Health

A variety of targeted interventions to improve the social, emotional and mental health of our students. "When students are happy, they can learn."



Useful Contact Numbers

Walsall SEN Team	01922 652871
Walsall Child Development Centre	01922 605800
Walsall CAMHS	01922 607400
Walsall School Nursing Service	01922 423249
Autism West Midlands	0121 450 7582
NSPCC	0808 800 5000
Samaritans	08457 90 90 90
Childline	0800 1111
Walsall SENDIAS	0808 802 6666